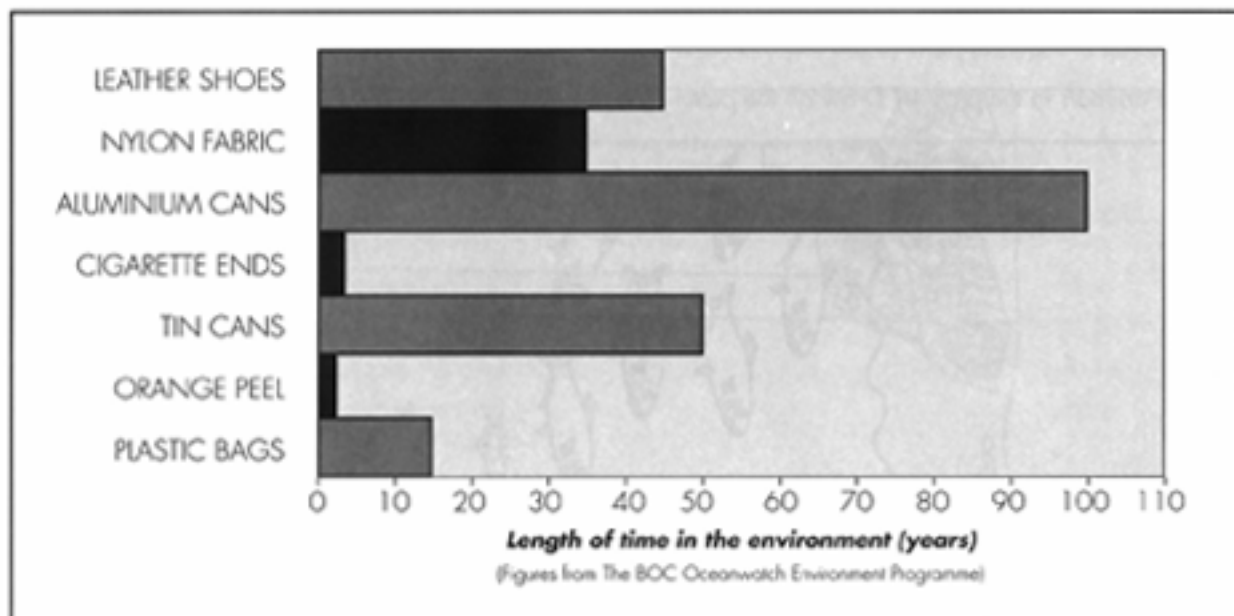


WHAT A LOAD OF RUBBISH!

When we throw away rubbish or drop litter, it doesn't just vanish. The graph below shows the length of time some common items of litter last in the environment. Use the graph to answer the questions below.



- According to the graph, which litter item lasts the longest?
- How long does it take for orange peel to break down?
- If you left a pair of trainers on the beach, how many years would they stay there for?
 - 2 years
 - 35 - 50 years
 - 90 years
- How long do cigarette ends last?
- Plastic bottles are not on the graph - how long do you think they last for?
 - 200 years
 - 6,325 years
 - Forever

