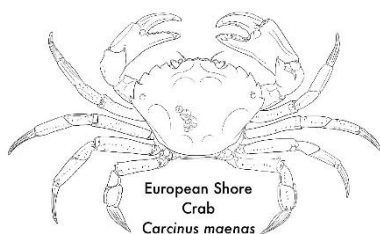


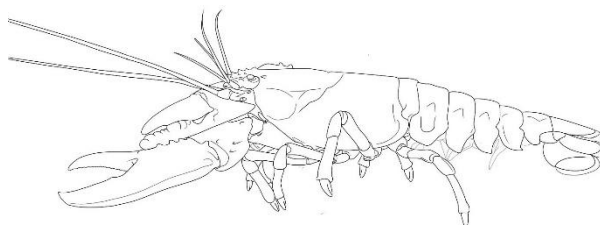
# Crustacean Feature Match!

Become a crustacean expert by researching these animals online.

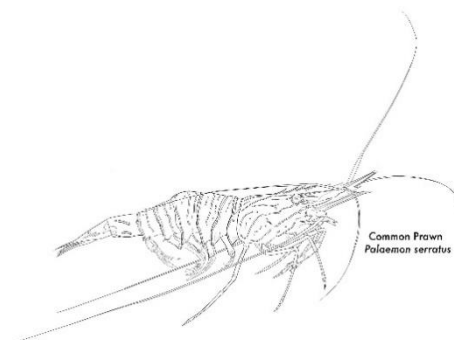
Draw a line to match the features to the type of crustacean. Some may apply to more than one!



European Shore Crab  
*Carcinus maenas*



European Common Lobster  
*Homarus gammarus*



Common Prawn  
*Palaemon serratus*

**Prawns**

Release eggs into the water

Two pairs of claws

**Crabs**

2<sup>nd</sup> tail segment overlaps the 3<sup>rd</sup> segment only

Brood eggs on abdomen

**Shrimps**

One pair of claws

Three pairs of claws

**Lobsters**

2<sup>nd</sup> tail segment overlaps the 1<sup>st</sup> and 3<sup>rd</sup> segments

## Speak like an expert!

Look up the definitions of these terms used to describe crustaceans.

Arthropod

Decapod

Carapace

Rostrum

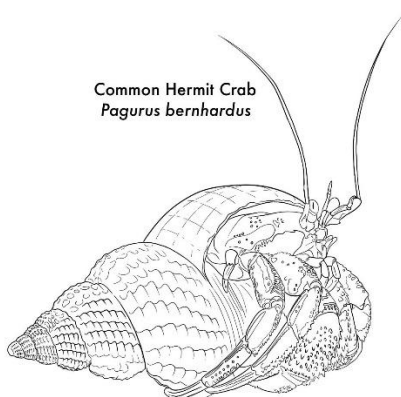
Chelae

Thorax

Chitin

Chelipods

Pleopods



Common Hermit Crab  
*Pagurus bernhardus*