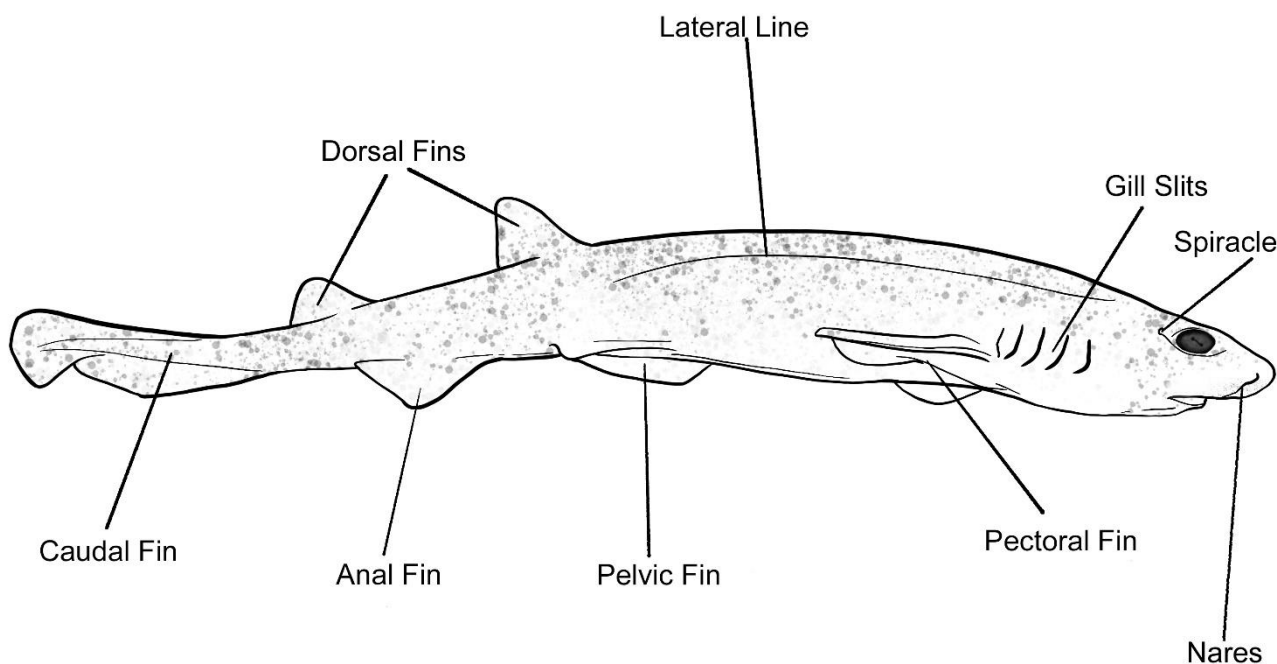


# Comparative Anatomy - External

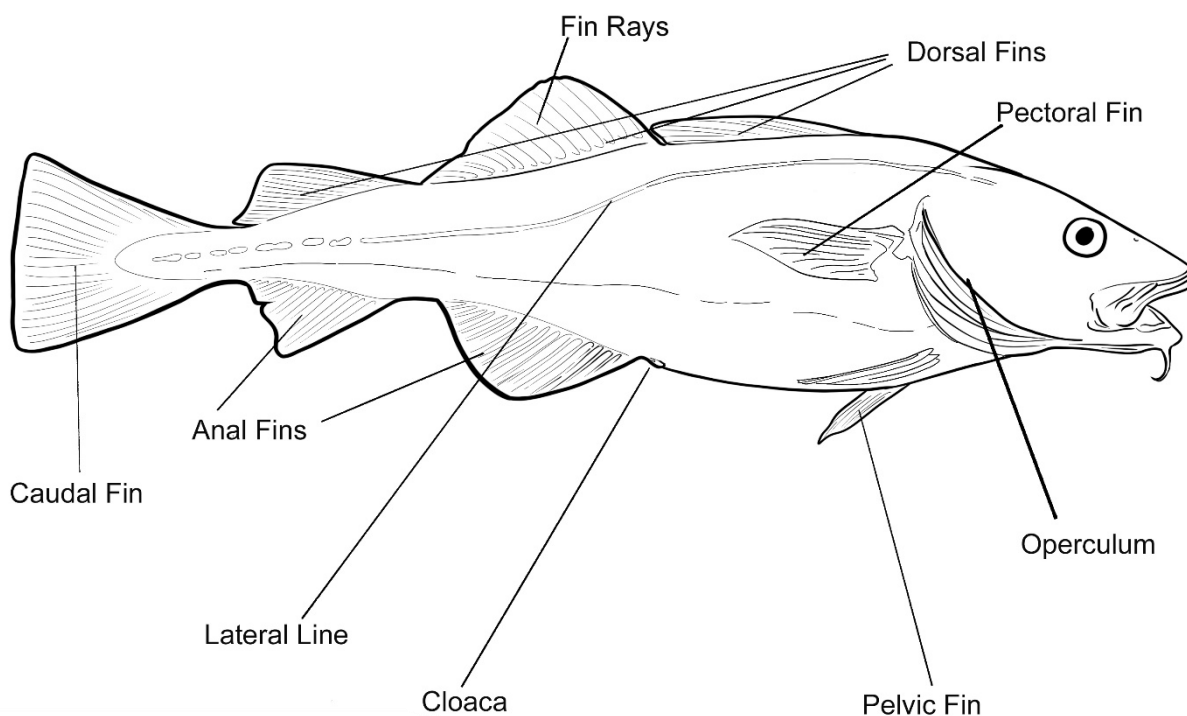
Sharks are very different from other fish. Have a close look at the external anatomy of a typical shark and bony fish and see if you can spot the differences! Compare the two by colouring them in so that all the features they have in common are the same colour, here is key to help:

Caudal Fin - red, Dorsal Fins - yellow, Anal Fins - green, Pelvic Fins - pink,  
Pectoral Fins - purple, Lateral Line - blue

## External Anatomy of a Catshark



## External Anatomy of a Typical Bony Fish- Cod



While both sharks and bony fish fins have the same names, they differ in structure, number and position on the body. There are also some unique features found only in one or the other of these animals. Complete the table below to analyse the differences between a Catshark and a Cod fish by writing in the number of fins or whether the feature is present (+) or absent (-).

	Catsharks	Cod Fish
Caudal Fin		
Anal Fins		
Pelvic Fins		
Pectoral Fins		
Dorsal Fins		
Fin Rays		
Spiracle		
Operculum		
Gill Slits		

## Fish Shaped

All fish, including sharks, have bilateral symmetry, just like we do; their right half is a mirror image of their left half. Typically, most fish are bilaterally flattened; meaning they are squished in from both sides to make a generally oval body shape in cross section. Most sharks are dorsoventrally flattened; meaning they are squished from top to bottom making their cross section wider rather than deeper. Try folding the paper along the midlines in the cross sections below and in turn, holding them up to a mirror to check the symmetry and see the complete shape. Then draw in the rest of the diagrams to complete the fish shape.

